



Foster 

Italian excellence since 1973

Index

Foster 4



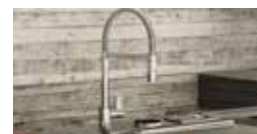
American Collection 11



Sinks 18



Faucets 38



Complements 41



Cooktops 42



Ovens 56



Hoods 66



Rangetops 74



Ranges 82





The Foster World

Our Mission

Since the beginning, we have created solutions for kitchen environments according to our criteria: high performance with attention to energy efficiency, ease of use enhanced by our design research, and advanced technology as a result of our vast experience.

This is the Foster philosophy, which has inspired each of our products for the last 40 years.

A value recognizable today in every product of our range.

The values of our land



Founded in 1973, Foster is an Italian company that operates worldwide. It is an integrated organization, with four highly specialized manufacturing plants, operating on different products and processes.

Foster's headquarters is in the historic "Terranova palace" in Brescello, a small village known for movies starring Don Camillo and Peppone. Brescello is a symbol of the countryside of northern Italy.

We breathe passion for beautiful things, respect for the environment that surrounds us, and a love for quality, hence our commitment to excellent service to meet the demands of a market increasingly sensitive to technological development and environmental protection.



Terranova palace is not just a building, it is the expression of Foster's love for art. In 1988, after the renovations to the former 17th century Franciscan convent. Foster established its headquarters here.

The restoration renovated the splendor to the prestigious frescoes and unearths ancient historical artifacts. The Terranova palace is a cultural heritage that the company wants to give back to the community in all its history, beauty and magnificence.

Foster was among the first Italian companies to join projects for environmental preservation and protection, and the building is now under the protection of the "Monuments and Fine Art Office".

A daily choice of Quality



PROGRESS AND RESPECT FOR THE ENVIRONMENT

Energy efficiency and advanced technology are two cornerstones of the Foster research common to the development of both products and processes.



OUR CHOICE

Besides using advanced production technologies, Foster pays handcrafted attention to detail: every standard product is custom-made.

An all-Italian experience



Designers of the most renowned kitchens and starred Chefs are the first stakeholders and the best consultants of all our projects, where aesthetics and functionality merge together in a perfect blend.

A natural process that begins from a cooking technique is accomplished through the kitchen design.



Design and food. Beauty and passion. These are the cornerstones of our culture, which Foster incorporates and interprets with a strong Italian spirit.



6 7 8 9

Fredex #1

6 6 6 6 6 6

Fredex #1

American Collection

The following proposals are the result of careful research, designed and studied specifically for the North American market.

We wanted to maintain the classic American kitchen design and add our typically Italian sensibility.

A blend that includes all the cornerstones that characterize Foster: design, functionality, and performance, which we present with pride and satisfaction.







American Collection

The Foster freestanding products are appliances built for professional performance and constructed with tailored care for every detail and finish.

Consistent with the Foster philosophy, the Foster Milano range is paired with a washing center with the same dimensions, materials, and finish that gives harmony and style to the entire kitchen.



American Collection

The Foster products range from cooking to washing, with a single coherent mood that gives harmony, consistency, and ample functionality.







American Collection

The simple and elegant design characterizes the kitchen environment, without constraint, integrating perfectly with both minimalist and classical designs.

Sinks





Sink Features



Foster brushed finish

The exclusive finishes on Foster steels are the result of diligent research, the aim being to achieve the perfect combination between good looks and functionality.

A distinctive feature, a true trademark that makes our products stand out for the ease of which they can be cleaned.



Sturdy sink

The quality of Foster sinks is also in the thickness.

All models use top grade stainless steel to manufacture sturdy sinks with an elegant design.



Diamond shaped bottom

The water drainage on the base of the sink is a minimalist, but original design with perfectly square edges and a diamond shaped bottom that allows perfect flow of water.



Accessories

The concept of functionality is a key element for Foster.

Each sink is accompanied by a series of practical and elegant accessories that transform the sink into a functional working center.

Sink Features



Faucets

Foster offers a varied collection of faucets, including models made in AISI 316 stainless steel, that guarantee a perfect resistance to corrosion, maximum hygiene, safety, and give an value to the wide range of sinks.



Matching

Foster is one of the few companies worldwide that manufactures both sinks and hobs, allowing us to offer a perfect match in shape and design between the cooker hob and the sink; for kitchens in which every detail counts.



Flush-mount

The product is installed in a 1 mm deep recess, thus being perfect flush with the worktop. Alternatively, it can be installed over the counter as well.



Undermount

The classy and contemporary way to install a sink, proposed here in a wide range of different models and designs.



Leonardo Sink Features



Functional design

The new black grids make a strong statement of design and functionality. They are made of a new, completely natural material, whose sober elegance perfectly complements the professional character of the Leonardo sinks. They are also hygienic, very light, resistant, easy to clean, and 100% ecological. It is a choice of environmental awareness and respect for nature.



Three ingenious steps

The Leonardo sink has an ingenious design that makes it simple to use a large set of optional accessories. Thanks to the three supporting steps, the accessories rest on different levels. On the first supporting step, the top-most one, the innovative Black grids slide, creating a large and practical surface to rinse food and crockery. Once the preparations are complete, the grids can be used to completely close the sink, hiding the bowls and ensuring a perfect order in the kitchen.



A complete working station

The second supporting step is meant to support and allow the sliding of a complete combination of accessories, which make some operation practical and safe: rinse, drain, slice, grate... everything can be done inside the sink, avoiding ruining or staining the precious surface of your kitchen. The Leonardo sink thus becomes a complete working station.



Smart and hygienic

The third supporting step is on the bottom of the quadra bowl. On this step rest the Black grids when placed on the bottom of the bowl, making it possible to rinse foodstuffs without their coming in contact with the bottom of the sink, which may be dirty. They can also support pots and dishes, preventing the scratching of the steel surface of the sink underneath.



Leonardo

Sink Features

Innovative engineering and design, unique details, carefully selected materials, artful artisanship, and technologically advanced manufacturing, define Leonardo sink and its accessories.

The accessories are designed to slide over two independent rails on the top of the sink, or to rest over the bottom thanks to one-centimeter-level; this system prevents food from touching the bottom of the sink.

Therefore, whatever you are preparing, from sliced vegetables to grated cheese, from pasta to rinsing small fruit, or washing dishes, the Foster kit of accessories makes everything easy and your kitchen will always be elegant and clean.

Accessories



* To use only with N3 chopping board

Leonardo sinks



UM 

Accessories: **M6 P3 L4 O2 N3 P2 T2 Z2**

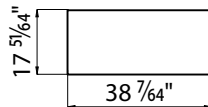


Black grids configurations edge positioning



Black grids configurations bottom positioning

Cut-out



Leonardo sink

1016 660

AISI 304 Stainless steel - Satin finish

Thickness: 16 Gauge

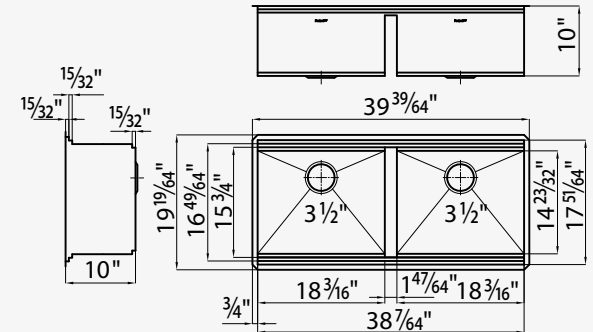
Inset: Undermount

Dimensions: 39 39/64" x 19 19/64"

2 bowls: 18 3/16" x 15 3/4"

Cut out: 38 7/64" x 17 51/64" template provided

Waste fitting: 3 1/2" - with stainless steel basket



UM 

Accessories: **M6 P3 L4 O2 N3 P2 T2 Z2**

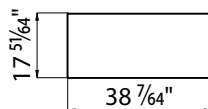


Black grids configurations edge positioning



Black grids configurations bottom positioning

Cut-out



Leonardo sink

1015 660

AISI 304 Stainless steel - Satin finish

Thickness: 16 Gauge

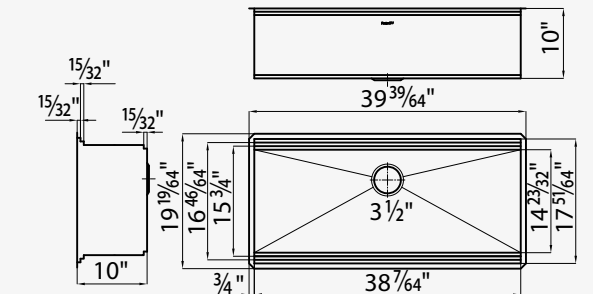
Inset: Undermount

Dimensions: 39 39/64" x 19 19/64"

Bowl: 38 7/64" x 15 3/4"

Cut out: 38 7/64" x 17 51/64" template provided

Waste fitting: 3 1/2" - with stainless steel basket



UM 

Accessories: **M6 P3 L4 O2 N3 P2 T2 Z2**

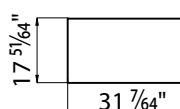


Black grids configurations edge positioning



Black grids configurations bottom positioning

Cut-out



Leonardo sink

1014 660

AISI 304 Stainless steel - Satin finish

Thickness: 16 Gauge

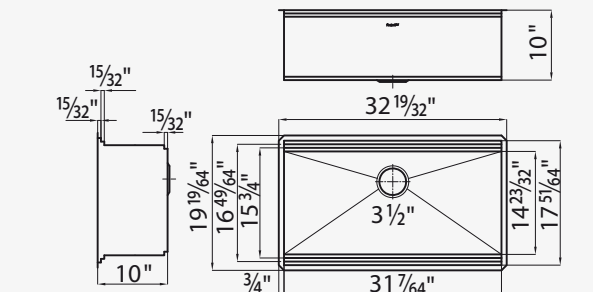
Inset: Undermount

Dimensions: 32 19/32" x 19 19/64"

Bowl: 31 7/64" x 15 3/4"

Cut out: 31 7/64" x 17 51/64" template provided

Waste fitting: 3 1/2" - with stainless steel basket

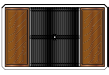


Leonardo sinks

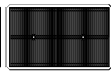


UM 

Accessories: **M6** **P3** **P4** **L4** **O2** **N3** **P2** **T2** **Z2**

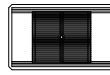


P4 grid



P4+P3 grids

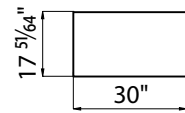
Black grids configurations edge positioning



P3 grid

Black grids configurations bottom positioning

Cut-out



Leonardo sink

1021 660

AISI 304 Stainless steel - Satin finish

Thickness: 16 Gauge

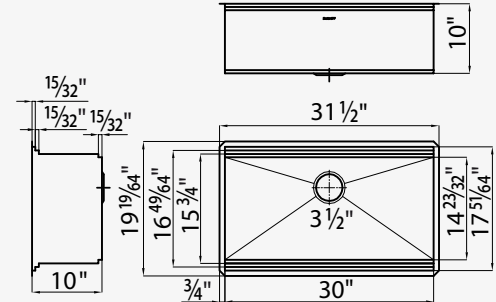
Inset: Undermount

Dimensions: 31 1/2" x 19 19/64"

Bowl: 30" x 15 3/4"

Cut out: 30" x 17 5/64" template provided

Waste fitting: 3 1/2" - with stainless steel basket



UM 

Accessories: **M6** **P3** **L4** **O2** **N3** **P2** **T2** **Z2**

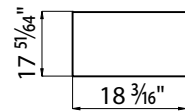


Black grids configurations edge positioning



Black grids configurations bottom positioning

Cut-out



Leonardo sink

1013 660

AISI 304 Stainless steel - Satin finish

Thickness: 16 Gauge

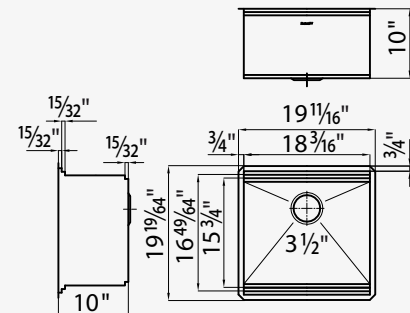
Inset: Undermount

Dimensions: 19 11/16" x 19 19/64"

Bowl: 18 3/16" x 15 3/4"

Cut out: 18 3/16" x 17 5/64" template provided

Waste fitting: 3 1/2" - with stainless steel basket



Accessories



M6 8642 000



P3 8100 600



P4 8100 601



L4 8631 300



O2 8153 100



Z2 * 8151 000



N3 8644 101



P2 * 8159 101



T2 * 8100 303

* To use only with N3 chopping board

Armored Sinks



Accessories



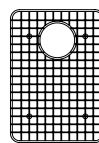
1 8644 034



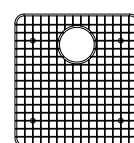
T 8100 154



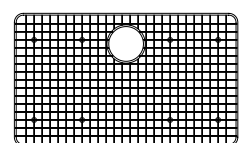
Z 8154 000



2 8100 401
Grid 13"x18"



3 8100 402
Grid 17"x18"



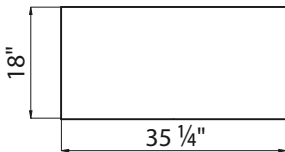
4 8100 403
Grid 30"x18"

Armored Sinks



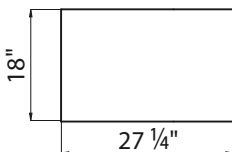
UM 

Cut-out



UM 

Cut-out



Armored sink

1231 660

AISI 304 Stainless steel

Satin finish

Thickness: 16 Gauge

Inset: Undermount

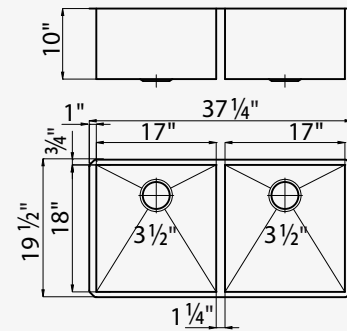
Dimensions: 37 1/4" x 19 1/2"

2 bowls: 2 x (17" x 18")

Cut-out: 35 1/4" x 18" template provided

Waste fitting: 3 1/2" - with stainless steel basket

Accessories: **1 T Z 3**



Armored sink

1230 660

AISI 304 Stainless steel

Satin finish

Thickness: 16 Gauge

Inset: Undermount

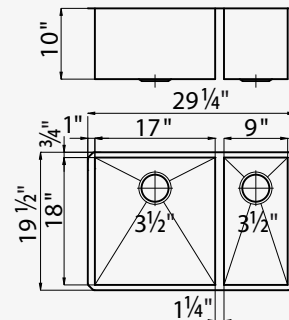
Dimensions: 29 1/4" x 19 1/2"

Bowl: 17" x 18" + 9" x 18"

Cut-out: 27 1/4" x 18" template provided

Waste fitting: 3 1/2" - with stainless steel basket

Accessories: **1 T Z 3**

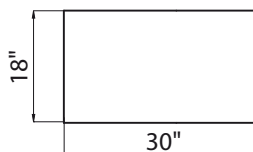


Armored Sinks



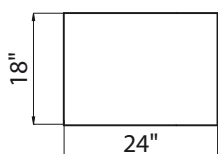
UM 

Cut-out



UM 

Cut-out



Armored sink

1237 660

AISI 304 Stainless steel

Satin finish

Thickness: 16 Gauge

Inset: Undermount

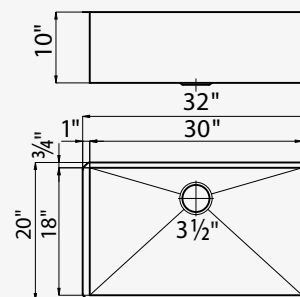
Dimensions: 32" x 20"

Bowl: 30" x 18"

Cut-out: 30" x 18" template provided

Waste fitting: 3 1/2" - with stainless steel basket

Accessories: **1 T Z 4**



Armored sink

1238 660

AISI 304 Stainless steel

Satin finish

Thickness: 16 Gauge

Inset: Undermount

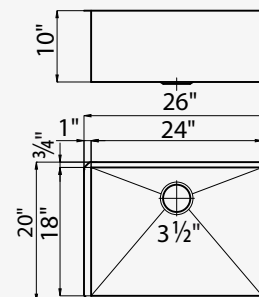
Dimensions: 26" x 20"

Bowl: 24" x 18"

Cut-out: 24" x 18" template provided

Waste fitting: 3 1/2" - with stainless steel basket

Accessories: **1 T Z 3**

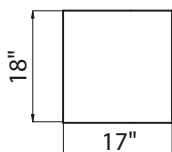


Armored Sinks



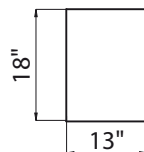
UM 

Cut-out



UM 

Cut-out



UM 

Cut-out



Armored sink

1236 660

AISI 304 Stainless steel

Satin finish

Thickness: 16 Gauge

Inset: Undermount

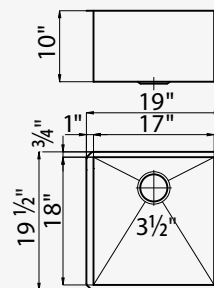
Dimensions: 19" x 19 1/2"

Bowl: 17" x 18"

Cut-out: 17" x 18" template provided

Waste fitting: 3 1/2" - with stainless steel basket

Accessories: **1 T Z 3**



Armored sink

1235 660

AISI 304 Stainless steel

Satin finish

Thickness: 16 Gauge

Inset: Undermount

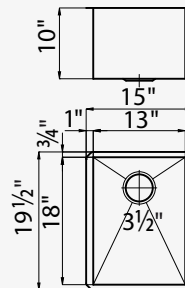
Dimensions: 15" x 19 1/2"

Bowl: 13" x 18"

Cut-out: 13" x 18" template provided

Waste fitting: 3 1/2" with stainless steel basket

Accessories: **1 T Z 2**



Armored sink

1234 660

AISI 304 Stainless steel

Satin finish

Thickness: 16 Gauge

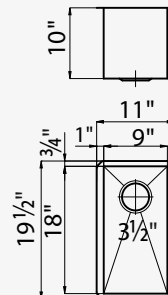
Inset: Undermount

Dimensions: 11" x 19 1/2"

Bowl: 9" x 18"

Cut-out: 9" x 18" template provided

Waste fitting: 3 1/2" with stainless steel basket



Michelangelo sinks



Minimalist but original design with perfectly square edges and diamond-shaped bottom that allows perfect flow of water.



The inclined containing area enriches the bowl with an original and functional motif.



A rich set of accessories transforms Michelangelo sinks in a comprehensive and practical working center.

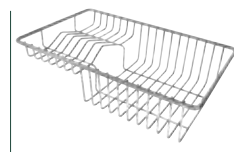
Accessories



M4 8656 001



N4 8644 100



T2 8100 303



P2 8159 101

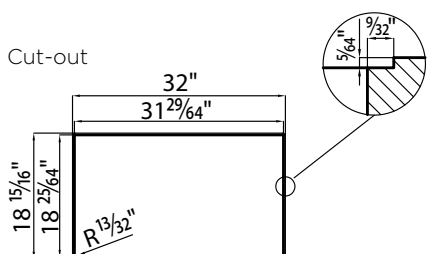


Z2 8151 000

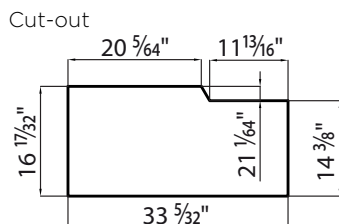
Michelangelo sinks



FM  OM 



UM 



Michelangelo sink

1419 660

AISI 304 Stainless steel

Satin finish

Thickness: 16 Gauge

Inset: Flush-mount

Dimensions: 31 31/32" x 18 57/64"

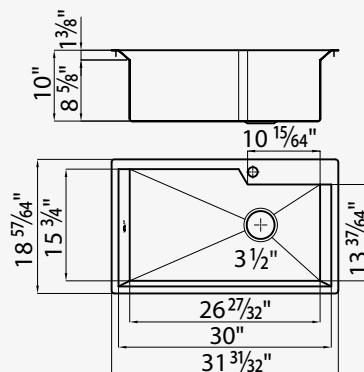
Bowl: 26 27/32" x 15 3/4"

Overmount (OM) cut out: 31 29/64" x 18 25/64"

Flush-mount (FM) cut-out: on web site

Waste fitting: 3 1/2" SPACE - with satin steel cover

Accessories: [M4](#) [N4](#) [T2](#) [P2](#) [Z2](#)



Michelangelo sink

1413 660

AISI 304 Stainless steel

Satin finish

Thickness: 16 Gauge

Inset: Undermount

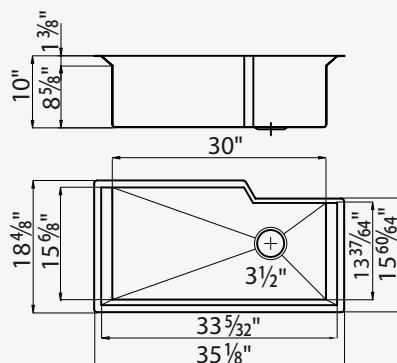
Dimensions: 35 1/8" x 18 4/8"

Bowl: 30" x 15 6/8"

Cut-out: see template provided or drawing on web site

Waste fitting: 3 1/2" SPACE - with satin steel cover

Accessories: [M4](#) [N4](#) [T2](#) [P2](#) [Z2](#)

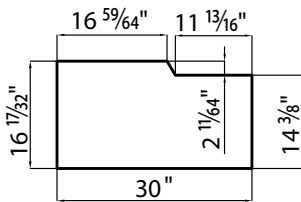


Michelangelo sinks



UM 

Cut-out



Michelangelo sink

1417 660

AISI 304 Stainless steel

Satin finish

Thickness: 16 Gauge

Inset: Undermount

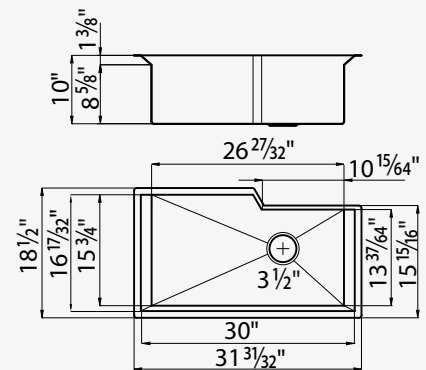
Dimensions: 31 31/32" x 18 1/2"

Bowl: 26 27/32" x 15 3/4"

Cut-out: see template provided or drawing on web site

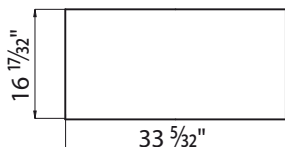
Waste fitting: 3 1/2" SPACE - with satin steel cover

Accessories: **M4** **N4** **T2** **P2** **Z2**



UM 

Cut-out



Michelangelo sink

1415 660 - finishing: Satin finish

1415 680 - finishing: Vintage

Thickness: 16 Gauge

Inset: Undermount

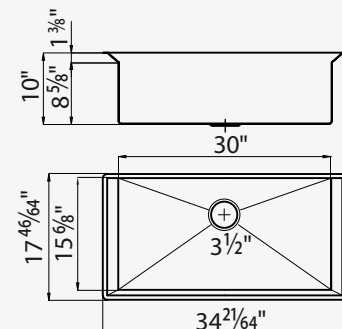
Dimensions: 34 21/64" x 17 44/64"

Bowl: 30" x 15 6/8"

Cut-out: 33 5/32" x 16 17/32" template provided

Waste fitting: 3 1/2" SPACE - with satin steel cover

Accessories: **M4** **N4** | **T2** **P2** **Z2** only with N4

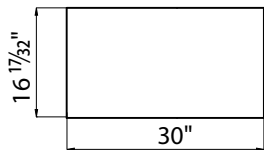


Michelangelo sinks



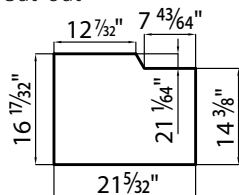
UM 

Cut-out



UM 

Cut-out



Michelangelo sink

1418 660 - finishing: Satin finish

1418 680 - finishing: Vintage

AISI 304 Stainless steel

Thickness: 16 Gauge

Inset: Undermount

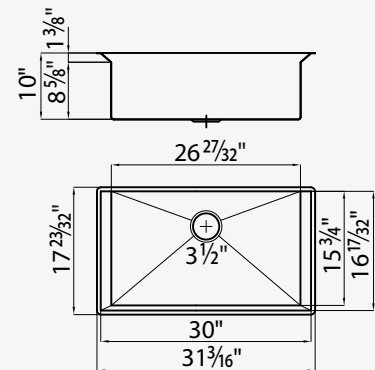
Dimensions: $31 \frac{3}{16}$ " x $17 \frac{23}{32}$ "

Bowl: $26 \frac{27}{32}$ " x $15 \frac{3}{4}$ "

Cut-out: 30 " x $16 \frac{17}{32}$ " template provided

Waste fitting: $3 \frac{1}{2}$ " SPACE - with satin steel cover

Accessories: **M4** **N4** | **T2** **P2** **Z2** only with N4



Michelangelo sink

1414 660

AISI 304 Stainless steel

Satin finish

Thickness: 16 Gauge

Inset: Undermount

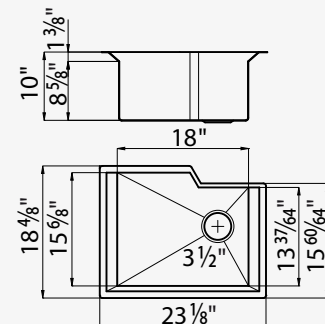
Dimensions: $23 \frac{1}{8}$ " x $18 \frac{4}{8}$ "

Bowl: 18 " x $15 \frac{6}{8}$ "

Cut-out: see template provided or drawing on web site

Waste fitting: $3 \frac{1}{2}$ " SPACE - with satin steel cover

Accessories: **M4** **N4** **T2** **P2** **Z2**

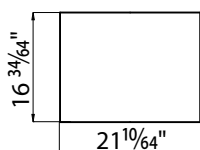


Michelangelo sinks



UM 

Cut-out



Michelangelo sink

1416 660

AISI 304 Stainless steel

Satin finish

Thickness: 16 Gauge

Inset: Undermount

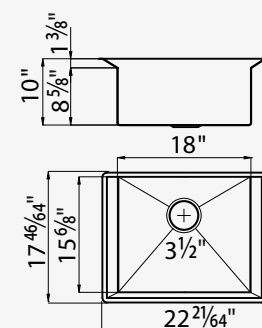
Dimensions: 22 ²¹/₆₄" x 17 ⁴⁶/₆₄"

Bowl: 18" x 15 ⁶/₈"

Cut-out: 21 ¹⁰/₆₄" x 16 ³⁴/₆₄" template provided

Waste fitting: 3 ¹/₂" SPACE - with satin steel cover

Accessories: **M4 N4** | **T2 P2 Z2** only with N4 |



Tornado Sinks



Tornado sink

1079 960

AISI 304 Stainless steel

Satin finish

Thickness: 18 Gauge

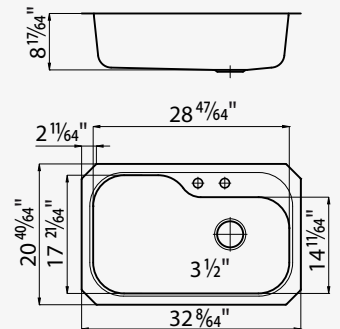
Inset: Undermount

Dimensions: 32 1/8" x 20 5/8"

Bowl: 28 47/64" x 17 21/64"

Cut-out: see template provided or drawing on web site

Waste fitting: 3 1/2" with stainless steel basket



UM

Accessories



H 8659 111



U 8100 111

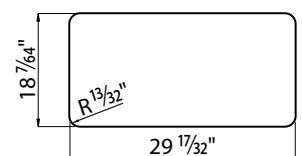


O 8152 100



Q 8151 100

Cut-out



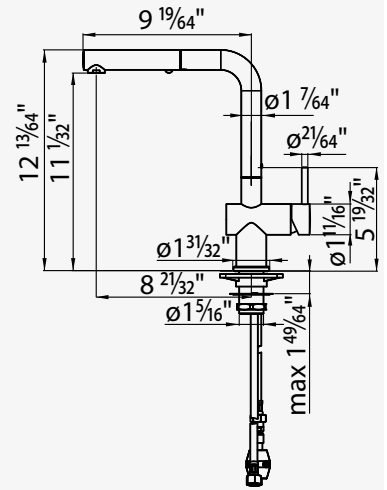


Ponza

8497 025

Single lever faucet with rotating barrel and extractable double jet shower
Chromed finish

Hole for tap's building-in: $\varnothing 1 \frac{3}{8}$ "
Built-in base: $\varnothing 1 \frac{31}{32}$ "
Rotating angle: 360°
Ceramic disc cartridge
Max worktop thickness: $1 \frac{49}{64}$ "
Strengthening plate included

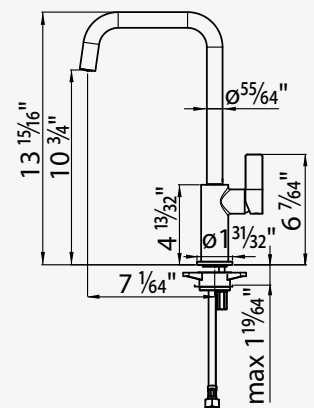


Sicilia

8485 005

Single lever faucet with rotating barrel
Chromed finish

Hole for tap's building-in: $\varnothing 1 \frac{3}{8}$ "
Built-in base: $\varnothing 1 \frac{31}{32}$ "
Rotating angle: 360°
Ceramic disc cartridge
Max worktop thickness: $1 \frac{19}{64}$ "
Rear encumbrance of control leverage: $\frac{3}{8}$ "
Strengthening plate included



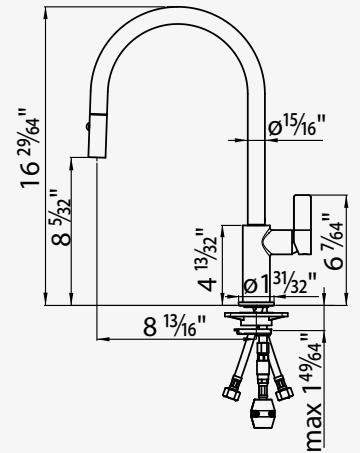


Capri

8467 005

Single lever faucet with rotating barrel and extractable double jet shower
Chromed finish

Hole for tap's building-in: $\varnothing 1 \frac{3}{8}$ "
Built-in base: $\varnothing 1 \frac{31}{32}$ "
Rotating angle: 180°
Ceramic disc cartridge
Max worktop thickness: $1 \frac{49}{64}$ "
Rear encumbrance of control leverage: $\frac{3}{8}$ "
Strengthening plate included

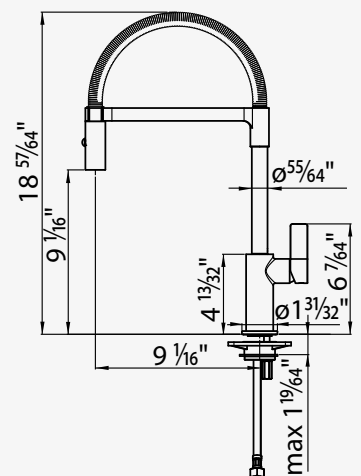


Salina

8487 005

Single lever faucet with rotating barrel and flexible double jet shower
Chromed finish

Hole for tap's building-in: $\varnothing 1 \frac{3}{8}$ "
Built-in base: $\varnothing 1 \frac{31}{32}$ "
Rotating angle: 360°
Ceramic disc cartridge
Max worktop thickness: $1 \frac{19}{64}$ "
Rear encumbrance of control leverage: $\frac{3}{8}$ "
Strengthening plate included



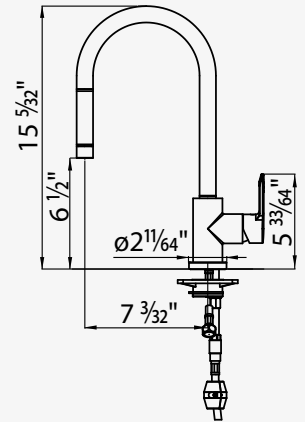


Volcano

8467 015

Single lever faucet with rotating barrel and extractable double jet shower
Chromed finish

Hole for tap's building-in: $\varnothing 1 \frac{3}{8}$ "
Built-in base: $\varnothing 2 \frac{1}{64}$ "
Rotating angle: 160°
Ceramic disc cartridge
Max worktop thickness: $2 \frac{2}{16}$ "
Rear encumbrance of control leverage: $\frac{1}{16}$ "
Strengthening plate included

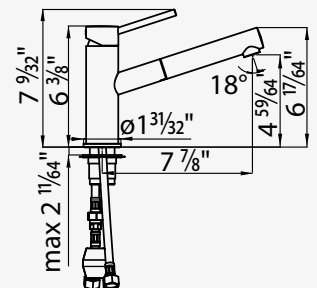


Elba

8466 015

Single lever faucet with rotating barrel and extractable head
Chromed finish

Hole for tap's building-in: $\varnothing 1 \frac{3}{8}$ "
Built-in base: $\varnothing 1 \frac{31}{32}$ "
Rotating angle: 140°
Ceramic disc cartridge
Max worktop thickness: $2 \frac{11}{64}$ "
Rear encumbrance of control leverage: $\frac{1}{4}$ "



Worktop complements

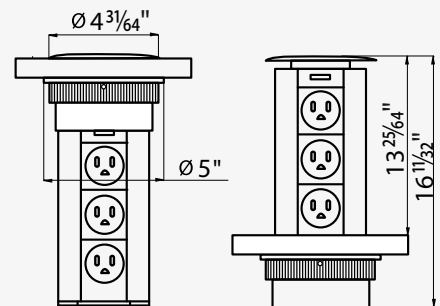


Totem Extractable socket-holder tower 8000 111

- 3 US sockets
- 1 USB port for charging

Power cable supplied
With brushed stainless steel cap

Cutout: $4 \frac{1}{64}$ "
Top thickness: max 5 "







Cooktops

Gas Cooktops Features





The perfect cooker

Large, powerful, functional, beautiful, perfect. Welcome to the new six-burner-hob by Foster Milano. The two wok-burners provide a combined power of 15,500 BTU, while saving 25% of gas.

Gas Cooktops Features



Burners

Foster hobs feature the state-of-art european technology: high efficiency, power, and precise control. The AE dual burner allows ultra-high and ultra-low temperatures thanks to two independent crowns of fire.



Professional grids

All the Foster cooker hobs are equipped with cast-iron grids, a perfect material due to its many properties: high thermal capacity that improves the cooking efficiency; weight that improves safety; sturdiness; easiness to clean.

A continuous platform of cast iron grates make it easy to move large pots and pans.



Metal Knobs

Exclusive and original, the Foster metal knobs are an example of the strength and quality of the materials used.

A distinctive feature shared by all the Foster elements in this collection, form an elegant uniformity in the kitchen.



Safe Cooking

All Foster cooker hobs are equipped with safety valves. These shut off the gas supply very quickly if the flame accidentally goes out.

The utmost freedom of movement it is guaranteed by the electronic under-knob ignition that allows a one-hand movement.

Gas Cooktops Features

Steel loyalist

Foster takes great care to use materials able to provide the best performance. Our entire range is made with AISI 304 - 18/10 and AISI 316 austenitic steels. Thanks to the high percentages of chrome and nickel, they give a particularly bright finish, are extremely sturdy, and absolutely resistant to rust and corrosion.

Designer finishes

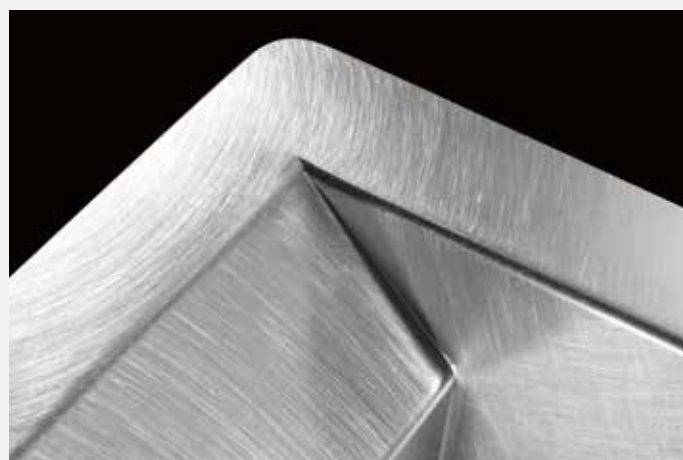
The exclusive finishes on Foster steels are the result of painstaking research, the aim being to achieve the perfect combination between good looks and functionality.

A distinctive feature and a true trademark that makes our products stand out for the ease of which they can be cleaned.



Foster brushed finish

The steel is treated with special natural fibers that give it the characteristic extrafine satin finish that is highly elegant and functional. This makes the surfaces very smooth and easy to clean.



Vintage finish

An old-fashioned look, along with the convenience of a steel surface that is not afraid of scratches and nicks. The asymmetric brushing obtained with traditional methods simulates the signs of aging and gives the steel a new and original appeal.

Cooktop edges



Flush-mount



The flush-mount cooker hobs have no vertical edge, and must be sunk into a recess in the worktop's surface. It can also be installed overmount.



Flat edge



An original edge, with an inclined 1/8" high profile, matching an extreme elegance with the easiness of installation.



Q4 edge



The casing has a square edge that stands outside the work surface by just 5/32".

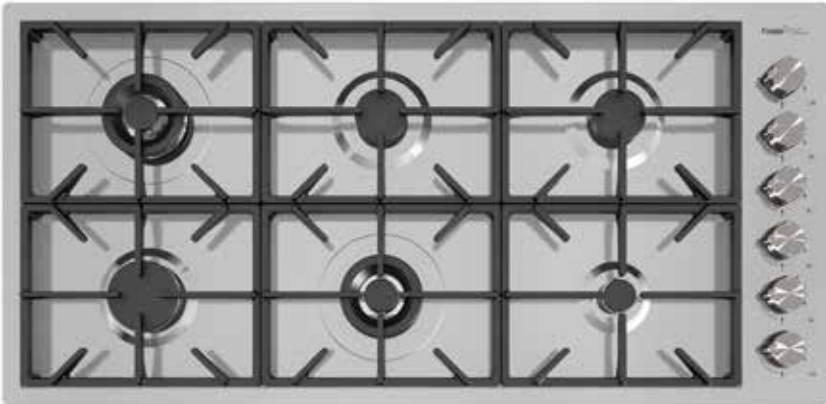


Standard edge



Traditional european built-in with the vertical, 5/16" edge.

Foster Milano Cooktops



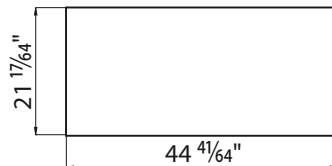
FM OM | Q4

Accessories



9601 727
Cast iron wok support

Cut-out



Foster Milano Cooktop 6b - 46"x22"

7639 900 - Flush-mount

7649 900 - Q4 Edge

Dimensions: 45 ²⁸/₆₄" x 22 ³/₆₄"

Q4 and OM cut out : 44 ⁴¹/₆₄" x 21 ¹⁷/₆₄"

Flush-mount (FM) cut-out: on web site

AISI 304 Stainless steel

Satin finish

Enamelled cast iron grids and burner covers

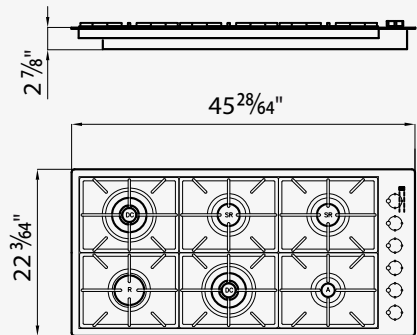
Electric under-knob ignition

Gas taps with safety valves

Power: 64.950 BTU total

LP Gas conversion kit included

Electrical Supply: 120VAC - 60Hz



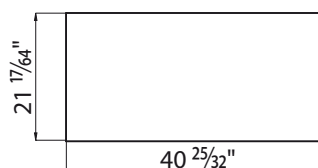
FM OM | Q4

Accessories



9601 727
Cast iron wok support

Cut-out



Foster Milano Cooktop 5b - 42"x22"

7638 900 - Flush-mount

7648 900 - Q4 Edge

Dimensions: 41 ³⁷/₆₄" x 22 ³/₆₄"

Q4 and OM cut out : 40 ²⁵/₃₂" x 21 ¹⁷/₆₄"

Flush-mount (FM) cut-out: on web site

AISI 304 Stainless steel

Satin finish

Enamelled cast iron grids and burner covers

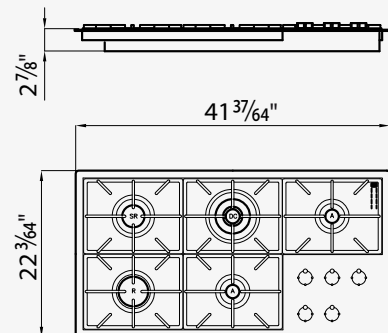
Electric under-knob ignition

Gas taps with safety valves

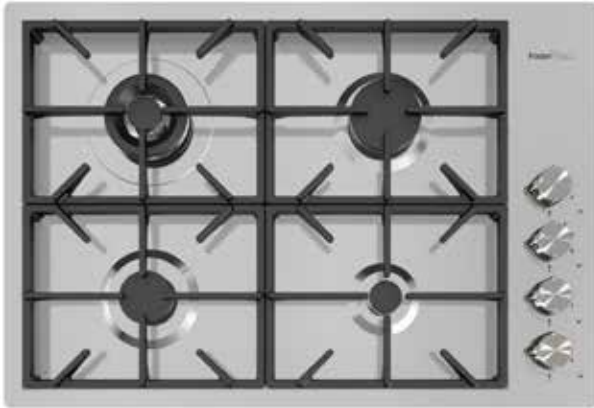
Power: 45.350 BTU total

LP Gas conversion kit included

Electrical Supply: 120VAC - 60Hz



Foster Milano Cooktops



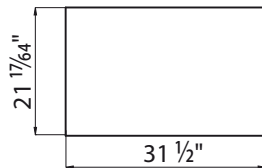
FM  OM  | Q4 

Accessories



9601 727
Cast iron wok support

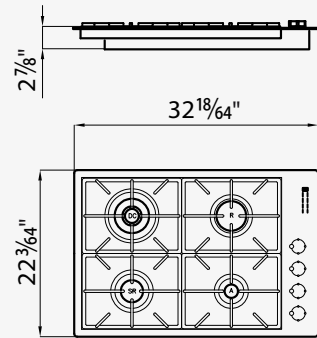
Cut-out



Foster Milano Cooktop 4b - 33"x22"

7637 900 - Flush-mount
7647 900 - Q4 Edge

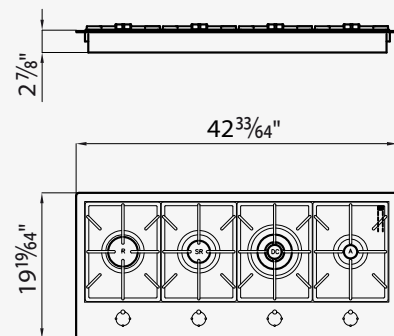
Dimensions: 32 ¹⁸/₆₄" x 22 ³/₆₄"
Q4 and OM cut out : 31 ¹/₂" x 21 ¹⁷/₆₄"
Flush-mount (FM) cut-out: on web site
AISI 304 Stainless steel
Satin finish
Enamelled cast iron grids and burner covers
Electric under-knob ignition
Gas taps with safety valves
Power: 40.350 BTU total
LP Gas conversion kit included
Electrical Supply: 120VAC - 60Hz



Foster Milano Cooktop 4b - 43"x20"

7640 900 - Flush-mount
7650 900 - Q4 Edge

Dimensions: 42 ³³/₆₄" x 19 ¹⁹/₆₄"
Q4 and OM cut out : 41 ⁴⁷/₆₄" x 18 ¹/₂"
Flush-mount (FM) cut-out: on web site
AISI 304 Stainless steel
Satin finish
Enamelled cast iron grids and burner covers
Electric under-knob ignition
Gas taps with safety valves
Power: 40.350 BTU total
LP Gas conversion kit included
Electrical Supply: 120VAC - 60Hz



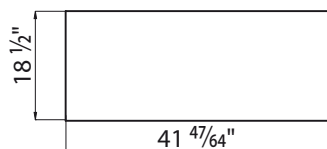
FM  OM  | Q4 

Accessories



9601 727
Cast iron wok support

Cut-out

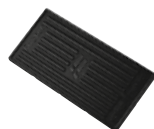


Professional Cooktop



FM  OM  | STD 

Accessories

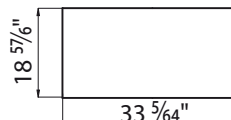


8172 000
Cast-iron griddle
17 ²¹/₆₄" x 8 ²¹/₃₂"

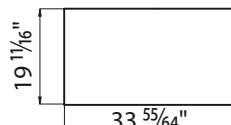


9601 668
Wok support

Cut-out OM



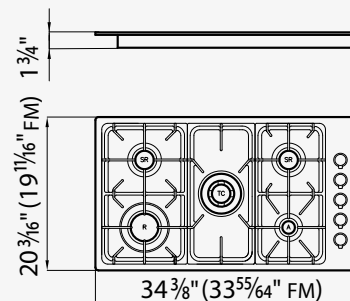
Cut-out STD



Professional Cooktop

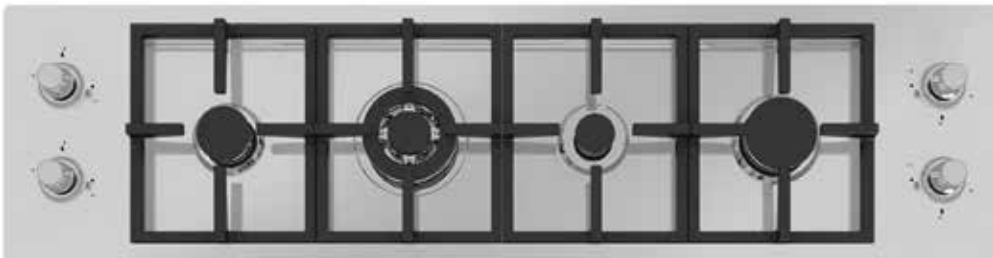
7245 962 - Flush-mount
7055 962 - Standard edge

Dimensions: Flush-mount 34 ³/₈" x 20 ³/₁₆"
Dimensions: Standard Edge 33 ⁵⁵/₆₄" x 19 ¹¹/₁₆"
Overmount (OM) cut out: 33 ⁵/₆₄" x 18 ⁵⁷/₆₄"
Flush-mount (FM) cut-out: on web site
Standard cut out: 33 ⁵⁵/₆₄" x 19 ¹¹/₁₆"
AISI 304 Stainless steel
Satin finish
Enamelled cast iron grids and burner covers
Electric under-knob ignition
Gas taps with safety valves
Power: 31,600 BTU total
LP Gas conversion kit included





Quadra Line Cooktop



Quadra Line Cooktop

7217 942 - Flush-mount

7216 942 - Q4 edge

Dimensions: 54 1/2" x 14"

Q4 and OM cut out : 53 45/64" x 13 3/16"

Flush-mount (FM) cut-out: on web site

AISI 304 Stainless steel

Satin finish

Enamelled cast iron grids and burner covers

Two cast iron grid adapters included

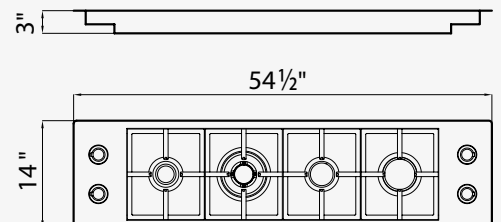
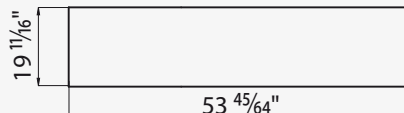
Electric under-knob ignition

Gas taps with safety valves

Power: 26,500 BTU total

LP Gas conversion kit included

Cut-out







Induction



Extended cooking area

Bridge function allow to associate two zones, forming a single extended cooking zone for pots of large size, or for more than one cooking simultaneously, with maximum exibility in pot positioning.










Slider control

The slider control allows for extremely quick temperature setting: with a light touch of the finger you may select the desired power level on the TOUCH display.

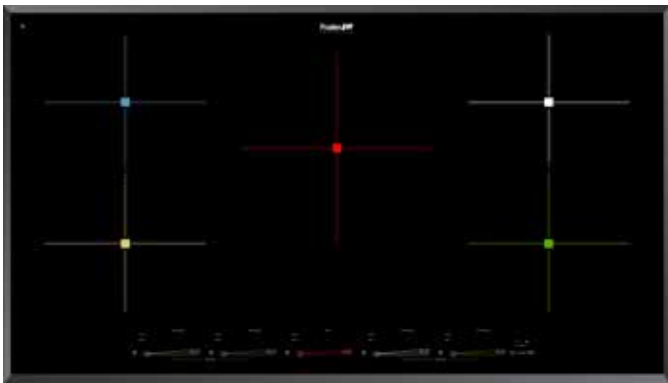


T-chef

Allows to set particular temperatures (melt 70°C/158°F, simmer 94°C/201°F) and keep them constant during cooking. Elaborate preparations can be easily obtained with chef-like results.

- | | | |
|--|---|---|
|  Powerboost |  Independent Timer |  Residual heat light |
|  Pause |  Security lock |  Overflow detection |
|  Recall | | |

Foster Milano Induction

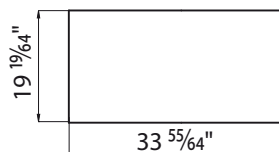


FM  OM 



4 zones size 7x8" 1 zone size 7x10"
 power 1.900-2.200 W (3.400-3.900 Booster)
 1 zone size 7x10"
 power 2.400-2.800 W (5.000-5.800 Booster)
 Electrical supply:
 208-240V - 50/60 Hz

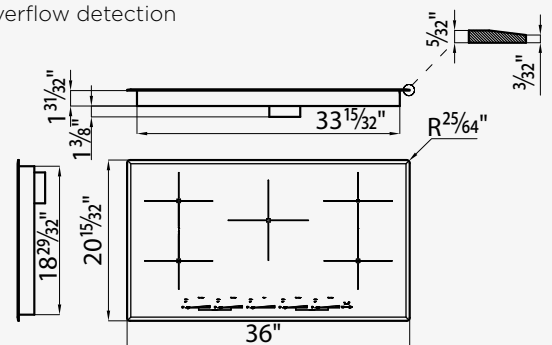
Cut-out



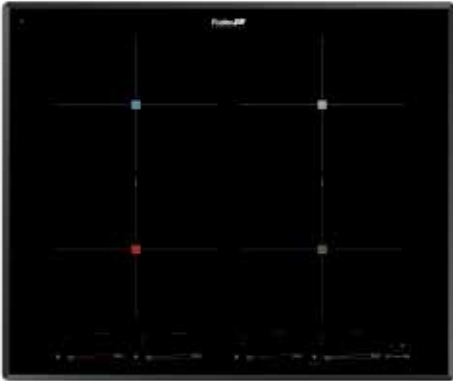
Foster Milano Induction

7390 945

Dimensions: 36" x 20 15/32"
 Cut-out: 33 55/64" x 19 19/64"
 Induction cooker hob
 9 settings plus powerboost
 4 slider commands
 Bridge function
 T-chef function
 Pause and Recall
 Independent timer
 Security lock
 Residual heat light
 Overflow detection



Foster Milano Induction

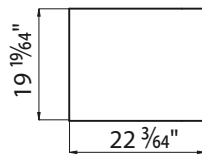


FM  OM 



4 zones size 7x8"
power 2.100 W (3.700 Booster)
Electrical supply:
208-240V - 50/60 Hz

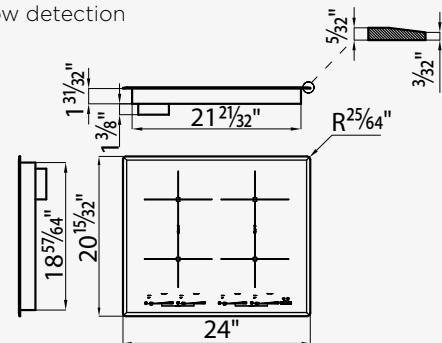
Cut-out



Foster Milano Induction

7371 945

Dimensions: 24" x 20 15/32"
Cut-out: 22 3/64" x 19 19/64"
Induction cooker hob
9 settings plus powerboost
4 slider commands
Bridge function
T-chef function
Pause and Recall
Independent timer
Security lock
Residual heat light
Overflow detection

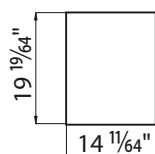


FM  OM 



2 zones size 7x8"
power 2.100 W (3.700 Booster)
Electrical supply:
208-240V - 50/60 Hz

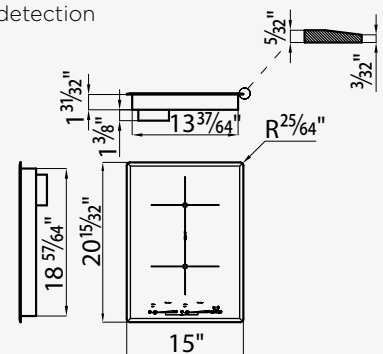
Cut-out



Foster Milano Induction

7323 945

Dimensions: 15" x 20 15/32"
Cut-out: 14 11/64" x 19 19/64"
Induction cooker hob
9 settings plus powerboost
2 slider commands
Bridge function
T-chef function
Pause and Recall
Independent timer
Security lock
Residual heat light
Overflow detection





Ovens





XXL chamber capacity

The Milano Ovens have a considerable chamber capacity with six levels of cooking. A valuable practicality for all types of cooking.



Dual Ventilation

The dual fan ventilation provides perfect heat distribution inside the chamber with surprisingly good results, even for more challenging recipes.



Triple asymmetrical lighting

Three lights, placed asymmetrically, provide perfect lighting, whatever cooking level is chosen.

Cooking functions



Dual convection bake



Bake



Keep warm (warm plus)



Convection broil



Broil



Proof warm



Pizza (lower convection)



Delicate cooking



Lights



Convection roast



Defrost



Fast preheating

Ovens Features



Telescopic guide

The practicality and accessibility to the cooking chamber are increased with the exclusive supply of full extension telescopic chromed racks.



Pyrolytic cleaning

Pyrolysis is the easiest way to guarantee an oven that is always clean. Once the cleaning cycle is terminated, just use a damp cloth to remove the residue.



Perfect safety

The ability to lock the oven door and the keyboard along with the four glass doors supplied with the oven are the best guarantees for safe and serene use.



Easy cleaning

The Foster Milano oven is supplied with a special anti-fingerprint treatment that makes cleaning the outside of the oven simple and quick.



Meat probe

Experience the precision of professional cooking with our meat probe that measures in real time the core temperature of your food.



Equipment

The Foster Milano ovens are supplied with an extensive series of accessories, which include an enamelled grill set.

Foster Milano Ovens



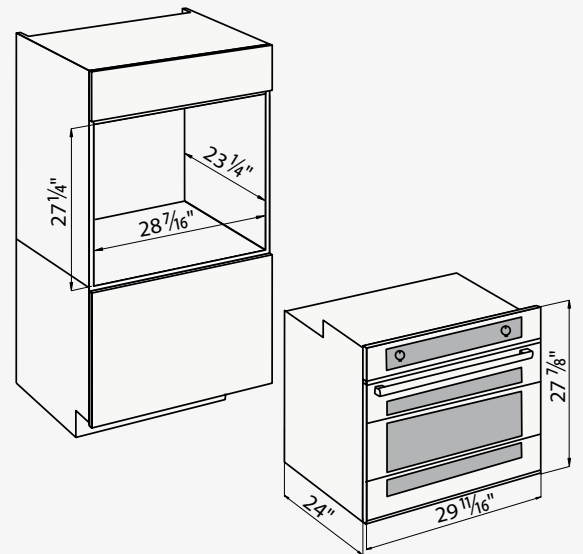
Foster Milano Single Pyrolytic Stainless Steel oven

7168 900

30" Multifunction pyrolytic oven
 Capacity: 4.1 CU.FT
 Stainless steel
 Satin finish
 Dual fan system
 Electronic programming
 12 cooking function
 Pyrolytic self clean
 Meat probe temperature control
 Electronic temperature regulation
 Triple asymmetrical lighting
 Automatic fast preheat
 Preheat time bar (25%, 50%, 75%, 100%)
 Preset/last used temperature memory
 Keyboard lock
 Child lock door
 Sabbath mode
 °C/°F degree unit
 12/24 hours clock format
 Door glasses: 4 heat resistant glasses
 Door inner side: full glass

Delivered accessories

2 chromed racks
 Telescopic chromed rack
 Enamelled grill set
 Meat Probe
 Electrical Supply: 120/240VAC - 60Hz
 120/208VAC - 60Hz



Accessories



4 9401 506
 Pizza plate

Cooking functions



Foster Milano Ovens



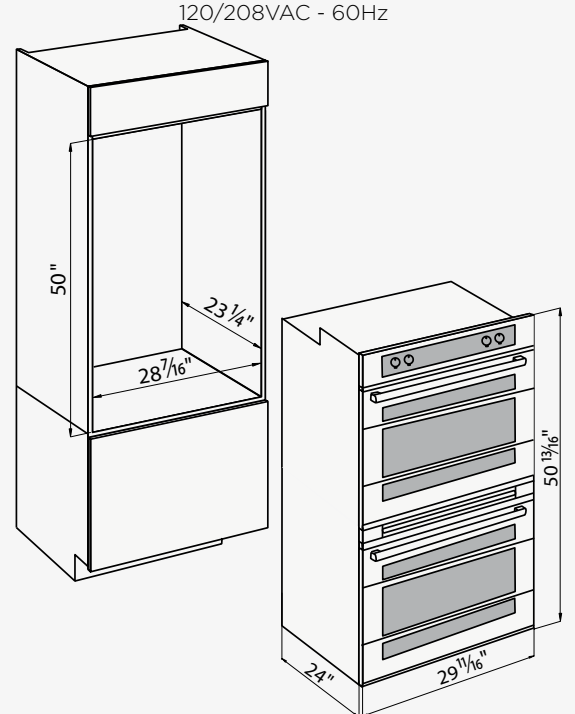
Foster Milano Double Pyrolytic Stainless Steel oven

7169 900

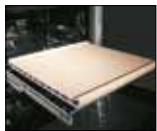
- 30" Multifunction pyrolytic Double oven
- Capacity: 4.1 + 4.1 CU.FT
- Stainless steel
- Satin finish
- Dual fan system
- Electronic programming
- 12 cooking function
- Pyrolytic self clean function
- Meat probe temperature control on upper cavity
- Electronic temperature regulation
- Triple asymmetrical lighting in each cavity
- Automatic fast preheat
- Preheat time bar (25%, 50%, 75%, 100%)
- Preset/last used temperature memory
- Keyboard lock
- Child lock door
- Sabbath mode
- °C/°F degree unit
- 12/24 hours clock format
- Door glasses: 4 heat resistant glasses
- Door inner side: full glass

Delivered accessories

- 4 chromed racks
- 2 telescopic chromed rack
- 2 Enamelled grill set
- Meat Probe
- Electrical Supply: 120/240VAC - 60Hz
- 120/208VAC - 60Hz



Accessories



4 9401 506
Pizza plate

Cooking functions



Foster Milano Ovens



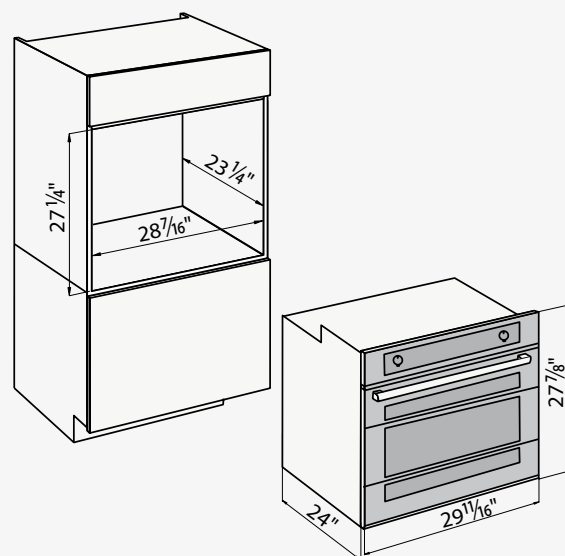
Foster Milano Single Pyrolytic Black Mirror oven

7168 906

30" Multifunction pyrolytic oven
 Capacity: 4.1 CU.FT
 Black Mirror glass finish
 Dual fan system
 Electronic programming
 12 cooking function
 Pyrolytic self clean
 Meat probe temperature control
 Electronic temperature regulation
 Triple asymmetrical lighting
 Automatic fast preheat
 Preheat time bar (25%, 50%, 75%, 100%)
 Preset/last used temperature memory
 Keyboard lock
 Child lock door
 Sabbath mode
 °C/°F degree unit
 12/24 hours clock format

Delivered accessories

2 chromed racks
 Telescopic chromed rack
 Enamelled grill set
 Meat Probe
 Electrical Supply: 120/240VAC - 60Hz
 120/208VAC - 60Hz



Accessories



4 9401 506
 Pizza plate

Cooking functions



Foster Milano Ovens



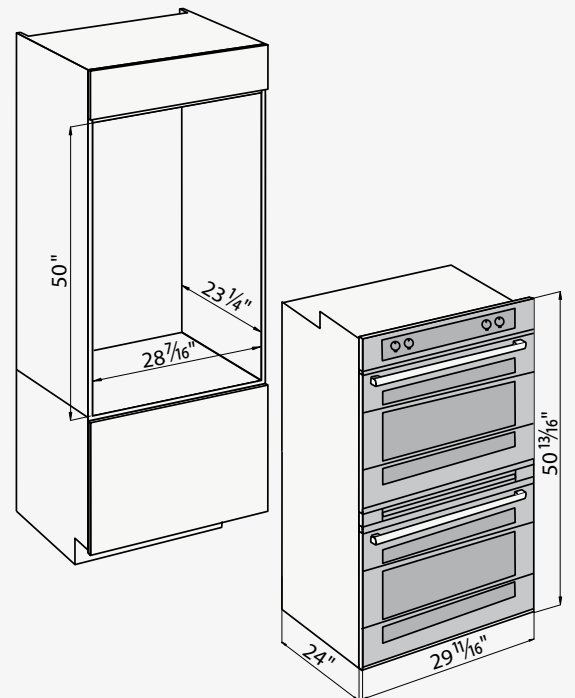
Foster Milano Double Pyrolytic Black Mirror oven

7169 906

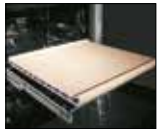
30" Multifunction pyrolytic Double oven
 Capacity: 4.1 + 4.1 CU.FT
 Black Mirror glass finish
 Dual fan system
 Electronic programming
 12 cooking function
 Pyrolytic self clean function
 Meat probe temperature control on upper cavity
 Electronic temperature regulation
 Triple asymmetrical lighting in each cavity
 Automatic fast preheat
 Preheat time bar (25%, 50%, 75%, 100%)
 Preset/last used temperature memory
 Keyboard lock
 Child lock door
 Sabbath mode
 °C/°F degree unit
 12/24 hours clock format

Delivered accessories

4 chromed racks
 2 telescopic chromed rack
 2 Enamelled grill set
 Meat Probe
 Electrical Supply: 120/240VAC - 60Hz
 120/208VAC - 60Hz



Accessories



4 9401 506
 Pizza plate

Cooking functions



Foster Milano Microwave Ovens



Foster Milano Stainless Steel Combi Micro

7104 920 Combi micro oven

8800 018 Side trim panel for 30" width installation

Electric convection + microwave + grill oven

Stainless steel Satin finish

6 cooking Functions

Electronic control Type

Temperature control

Digital touch control

Usable capacity 1,34CuFt

Cavity finish: stainless steel

2 Rack positions

Halogen lighting

Microwave power levels: 0/200/400/600/800/1000 W

Double glass

Full glass inner side

Satin finish Stainless steel handle

Keyboard lock

Temperature unit: °F

11 Auto cooking programs

Automatic defrosting by time and weight

Delivered accessories

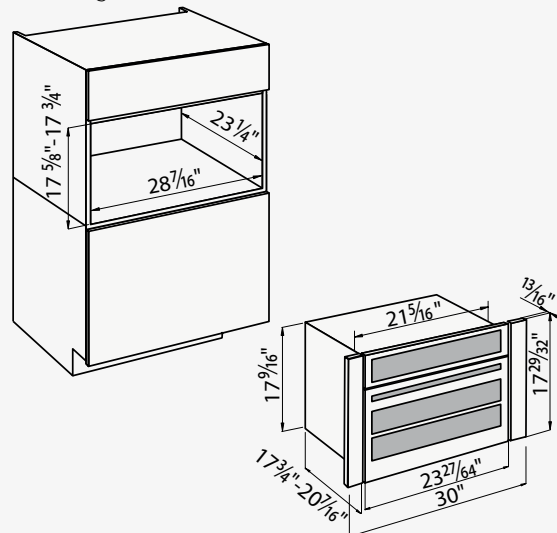
1 turntable plate

1 rectangular glass tray

1 rectangular rack

Electrical Supply: 240 V - 60Hz

Power rating: 3800 W



Cooking functions



Microwave



Broiler



Convection



Broiler
Microwave



Convection
Microwave



Convection
Broiler



Thanks to the three different principles of cooking, Foster Milano combi-micro is a really complete oven: microwave, convection, and grill are combined into an amazing set of programs.



The cooking chamber is fully in stainless steel and equipped with revolving plate, Pyrex casserole, and steel grid.

Foster Milano Microwave Ovens



Foster Milano Black Mirror Combi Micro

7104 926 Combi micro oven

8800 618 Side trim panel for 30" width installation

Electric convection + microwave + grill oven

Black Mirror glass finish

6 cooking Functions

Electronic control Type

Temperature control

Digital touch control

Usable capacity 1,34CuFt

Cavity finish: stainless steel

2 Rack positions

Halogen lighting

Microwave power levels: 0/200/400/600/800/1000 W

Double glass

Full glass inner side

Satin finish Stainless steel handle

Keyboard lock

Temperature unit: °F

11 Auto cooking programs

Automatic defrosting by time and weight

Delivered accessories

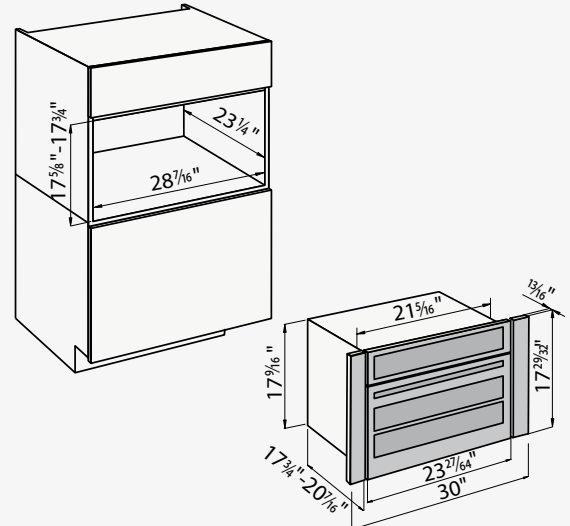
1 turntable plate

1 rectangular glass tray

1 rectangular rack

Electrical Supply: 240 V - 60Hz

Power rating: 3800 W



Cooking functions



Microwave



Broiler



Convection



Broiler
Microwave



Convection
Microwave



Convection
Broiler



The various functions allow for a wide range of possibilities, both for cooking and for re-heating pre-cooked food.



The FL combi oven, thanks to the presence of convection cooking, is a complete oven, and also wonderful to prepare pastries.



Superior ventilation

High-efficiency motors and our attention to manufacturing details determine higher ventilation performances.



High quality materials

The Foster hoods distinguish themselves for reliability and robustness thanks to the first quality materials and components used, which allow clients to choose a selection of products that combine design and functionality.



Low noise level

Foster uses high quality motors, which allow high elevated flow rates and low noise levels.

Hoods



Hoods



Cucinotta Hood



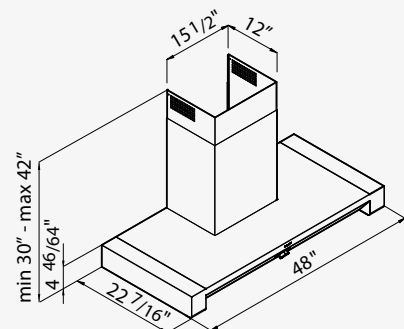
Cucinotta hood design is perfectly matched with Milano ranges and rangetops



Accessories:
charcoal filters kit n. 1 x 9700720

Wall-mounted suction hoods 2463 900 - 48"

Satin finish AISI 304 stainless steel
Telescopic chimney
Grease filter: commercial style baffle filters
Optional charcoal filter
Lighting: 3x20W halogen lamps
Four Speed functioning
Delay off timer
Air flow rate: 900 CFM
Pressure: 580 Pa
Noise level: 59 dBA
Electrical Supply: 120VAC - 60Hz





Milano Island

Accessories:
 charcoal filters kit-
 36" hood - n. 1 x 9700901
 48" hood - n. 2 x 9700901



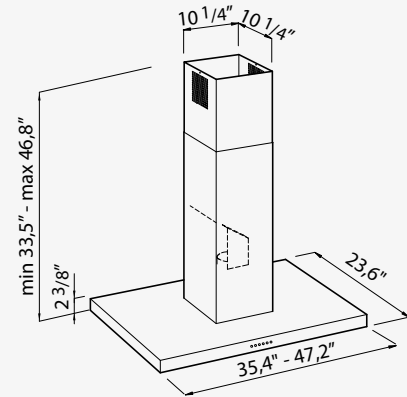
Milano Wall

Accessories:
 charcoal filters kit-
 30" hood - n. 1 x 9700901
 36" hood - n. 1 x 9700901
 48" hood - n. 1 x 9700901

Island suction hoods

2454 900 - 36"
 2455 900 - 48"

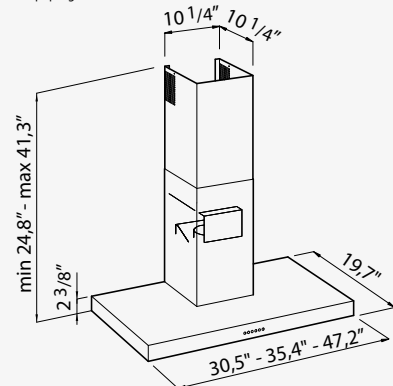
Satin finish
 Telescopic chimney
 Grease filter in anodized aluminium (5+1 layers)
 Optional charcoal filters
 Lighting: 4x20W dichroic lamps
 Four Speed functioning
 Delay off timer
 Aluminium die-cast motor housing
 Air flow rate: 600 CFM
 Pressure: 480 Pa
 Noise level: 63 dBA/4.9 sones
 Electrical Supply: 120VAC - 60Hz



Wall-mounted suction hoods

2456 910 - 30"
 2456 900 - 36"
 2457 900 - 48"

Satin finish
 Telescopic chimney
 Grease filter in anodized aluminium (5+1 layers)
 Optional charcoal filters
 Lighting: 2x20W dichroic lamps
 Four Speed functioning
 Delay off timer
 Aluminium die-cast motor housing
 Air flow rate: 600 CFM
 Pressure: 480 Pa
 Noise level: 63 dBA/4.9 sones
 Electrical Supply: 120VAC - 60Hz





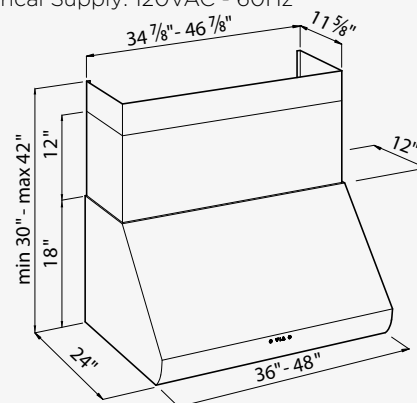
Milano Gran Chef

Accessories:
 charcoal filters kit-
 36" hood - n. 1 x 9700900
 48" hood - n. 2 x 9700901

Wall-mounted professional suction hoods

- 2460 900 - 36"
- 2460 901 - telescopic chimney for 36" model
- 2461 900 - 48"
- 2461 901 - telescopic chimney for 48" model

Satin finish
 Grease filter: commercial style baffle filters
 Optional charcoal filters
 Lighting: 48" model - 4x20W dichroic lamps
 36" model - 3x20W dichroic lamps
 Four Speed functioning
 Delay off timer
 EBM Dual Motor (Duct size 8")
 Air flow rate: 1100 CFM
 Pressure: 800 Pa
 Noise level: 66 dBA/5.1 sones
 Motors Top or Back vented
 Chimney not included (optional)
 Electrical Supply: 120VAC - 60Hz





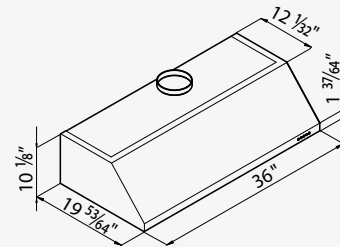
Cuneo Hood 36

Accessories:
charcoal filters kit- n. 1 x 9700709

Wall-mounted suction hoods

2462 910 - 36"

Satin finish
Grease filter in anodized aluminium
Optional charcoal filters
Lighting: 2x20W halogen lamps
Four Speed functioning
Delay off timer
Air flow rate: 600 CFM
Pressure: 480 Pa
Noise level: 59 dBA
Electrical Supply: 120VAC - 60Hz



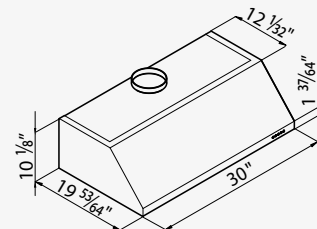
Cuneo Hood 30

Accessories:
charcoal filters kit- n. 1 x 9700709

Wall-mounted suction hoods

2462 900 - 30"

Satin finish
Grease filter in anodized aluminium
Optional charcoal filters
Lighting: 2x20W halogen lamps
Four Speed functioning
Delay off timer
Air flow rate: 600 CFM
Pressure: 480 Pa
Noise level: 59 dBA
Electrical Supply: 120VAC - 60Hz





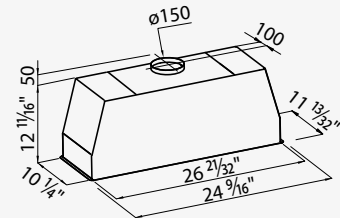
Quadra Slim

Accessories:
charcoal filters kit- 9700902

Built in suction hood

2458 910 - 26 21/32" x 10 1/4"

Satin finish
Grease filter: commercial style baffle filters
Optional charcoal filters
Lighting: 2x20W dichroic lamps
Four Speed functioning
Delay off timer
Cut Out: 26 57/64" x 10 14/32"
Aluminium die-cast motor housing
Air flow rate: 600 CFM
Pressure: 620 Pa
Noise level: 63 dBA/4.9 sones
Electrical Supply: 120VAC - 60Hz



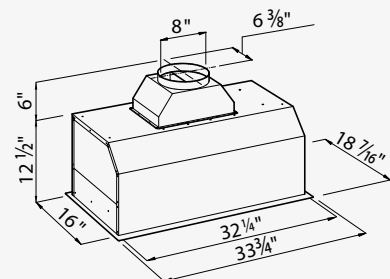
Quadra

Accessories:
charcoal filters kit - 9700900

Built in suction hood

2458 900 - 33 3/4" x 16"

Satin finish
Grease filter: commercial style baffle filters
Optional charcoal filters
Lighting: 2x20W dichroic lamps
Four Speed functioning
Delay off timer
Cut Out: 32 13/32" x 16 3/16"
EBM Dual Motor (Duct size 8")
Air flow rate: 1100 CFM
Pressure: 800 Pa
Noise level: 66 dBA/5.1 sones
Electrical Supply: 120VAC - 60Hz





FLY 60"

Accessories:
charcoal filters kit- n. 3 x 9700901



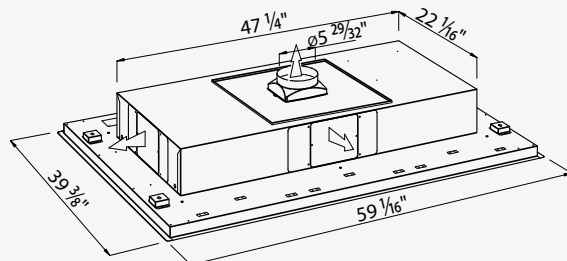
FLY 44"

Accessories:
charcoal filters kit- n. 2 x 9700901

Ceiling suction hoods

2459 910

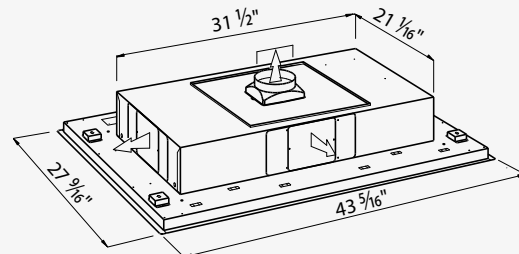
External motor functioning
Satin finish
Dimension: 59 1/16" x 39 3/8"
cut out: create a false ceiling with a niche of 57 11/16" x 37 2/2" x 10 5/8"
Lighting: 4x20W Dimmer Dichroic lamps
Remote control
Electrical Supply: 120VAC - 60Hz



Ceiling suction hood

2459 920

External motor functioning
Satin finish
Dimension: 43 5/16" x 27 9/16"
cut out: create a false ceiling with a niche of 41 15/16" x 26 3/16" x 10 5/8"
Lighting: 4x20W Dimmer Dichroic lamps
Remote control
Electrical Supply: 120VAC - 60Hz



Remote motors

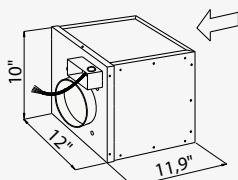


Motor for attic installation

2459 940



- motor 600CFM aluminium die-cast motor housing
- pressure 480Pa
- noise level 62dBA
- air inlet 5 29/32" round

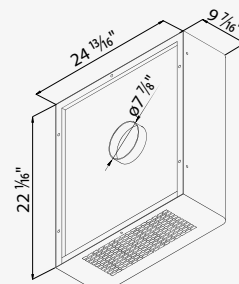


Motor for outdoor installation

2459 930



- motor 1100CFM - EBM
- absorption 420W
- pressure 920Pa
- noise level 65dBA
- air inlet da 8" in 7 7/8" round





Rangetops



Gas Rangetops Features



Professional cooking

Foster's Rangetops bring a professional look to the cooking area. Their steel elegance grants a remarkable visual impact, whatever the style and materials of the kitchen.



XXL cast iron grids

Performance and practicality are the main features of the Foster Milano Rangetop. The weighty enamelled cast iron grid has extraordinary dimensions, with a working surface up to 50% bigger compared to a normal domestic cooker hob. It is now possible to use all the burners at the same time, even with large pots.



An ergonomic control panel

The frontal position of the knobs, due to the inclination of the control board, guarantees an everyday practicality. Their generous size and original shape guarantee an easy and safe grip. The under-knob ring is not only a fine stylistic detail, but also of great help when cleaning the hob.



Power and efficiency

The last generation AE burners (high efficiency) are efficient and powerful, providing more than 25% energy saving compared to standard burners. All Rangetop models are designed with at least one wok Dual burner of 15.500 Btu/h and the six burner model has even two wok burners. The Dual burners system, or twin-use, offers the possibility to ignite only the inner crown, to heat a small coffee pot or pan, or both crowns, using only one knob.

Gas Rangetops Features



Versatile installation

The Foster Rangetop offers a great versatility of installation, it can be built-in in different ways between the kitchen worktops, both in full continuity with other surfaces, or marking a discontinuity to give greater emphasis to its steel structure. Alternatively, the Rangetop can even be simply placed on top of the kitchen counter, in particular, the four-burner-in-line model 3164 900.



Fully equipped

The Foster Milano Rangetop with the inline burners is also available with an elegant "back shelf" on which the most commonly used products can be stored: salt, spices, and oil can always be within reach (ref. 3154 900).

Foster Milano Rangetops



Foster Milano Rangetop 6b - 48" x 27"

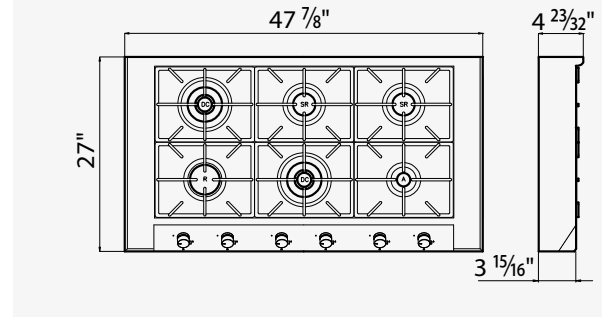
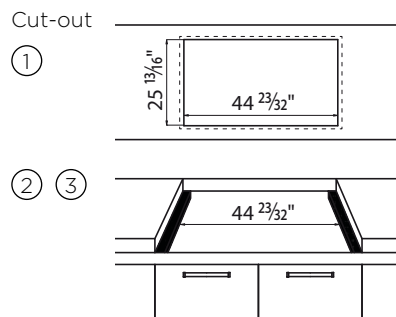
3166 900

Dimensions: 47 7/8" x 27"
 AISI 304 Stainless steel
 Satin finish
 Enamelled cast iron grids and burner covers
 Electric under-knob ignition
 Gas taps with safety valves
 Power: 64.950 BTU total
 LP Gas conversion kit included
 Electrical Supply: 120VAC - 60Hz

Accessories



9601 727
 Cast iron wok support



Foster Milano Rangetops



Foster Milano Rangetop 4b - 48" x 27"

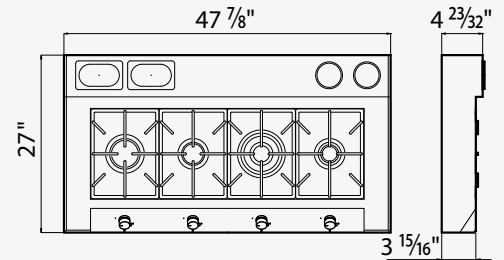
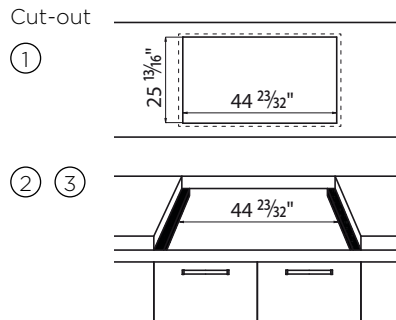
3154 900

Dimensions: 47 7/8" x 27"
 AISI 304 Stainless steel
 Satin finish
 Enamelled cast iron grids and burner covers
 Electric under-knob ignition
 Gas taps with safety valves
 Power: 39.600 BTU total
 LP Gas conversion kit included
 Electrical Supply: 120VAC - 60Hz

Accessories



9601 727
 Cast iron wok support



Foster Milano Rangetop 4b - 48" x 20"

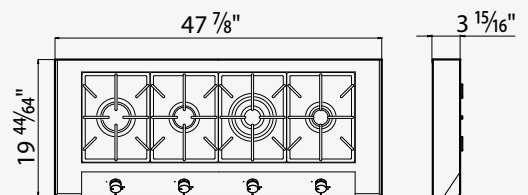
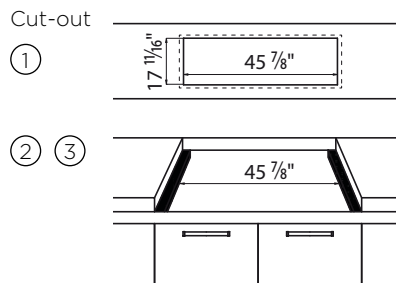
3164 900

Dimensions: 47 7/8" x 19 44/64"
 AISI 304 Stainless steel
 Satin finish
 Enamelled cast iron grids and burner covers.
 Electric under-knob ignition
 Gas taps with safety valves
 Power: 39.600 BTU total
 LP Gas conversion kit included
 Electrical Supply: 120VAC - 60Hz

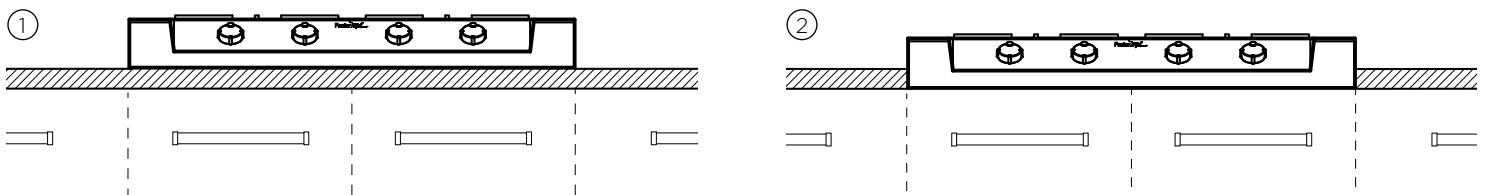
Accessories



9601 727
 Cast iron wok support



How to install Rangetops cooker hobs



Foster Milano Rangetops



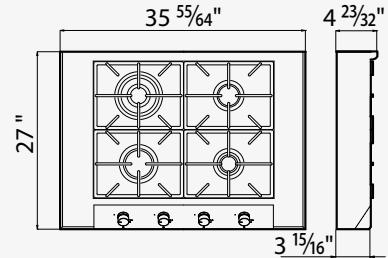
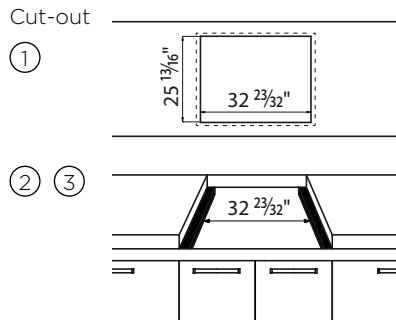
Foster Milano Rangetop 4b - 36" x 27" 3162 900

Dimensions: 35 55/64" x 27"
 AISI 304 Stainless steel
 Satin finish
 Enamelled cast iron grids and burner covers
 Electric under-knob ignition
 Gas taps with safety valves
 Power: 39.600 BTU total
 LP Gas conversion kit included
 Electrical Supply: 120VAC - 60Hz

Accessories



9601 727
Cast iron wok support



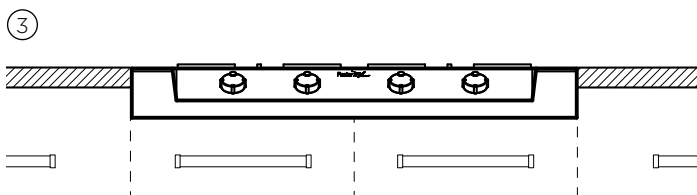
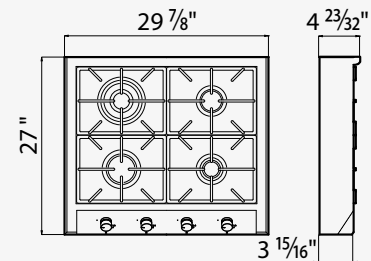
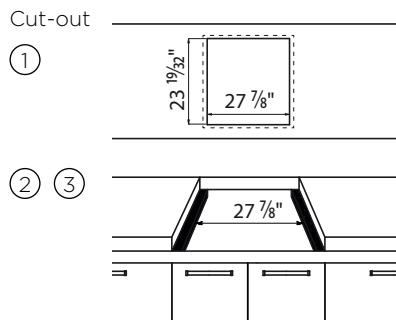
Foster Milano Rangetop 4b - 30" x 27" 3163 900

Dimensions: 29 7/8" x 27"
 AISI 304 Stainless steel
 Satin finish
 Enamelled cast iron grids and burner covers
 Electric under-knob ignition
 Gas taps with safety valves
 Power: 39.600 BTU total
 LP Gas conversion kit included
 Electrical Supply: 120VAC - 60Hz

Accessories



9601 727
Cast iron wok support



1. Sit-up installation on the worktop
2. Sit-up installation on the cabinets and protruding over the worktop (ref. photo page 77)
3. Built-in installation flush with the worktop

Foster Milano Induction Ranges



Foster Milano Induction Ranges 48" x 27"

3170 900

AISI 304 Stainless steel

Satin finish

Induction cooker hob:

9 settings plus powerboost

5 slider commands

Bridge function

T-chef function

Pause and Recall

Independent timer

Security lock

Residual heat light

Overflow detection

4 zones size 7x8"

power 1.900-2.200 W (3.400-3.900 Booster)

1 zone size 7x10"

power 2.400-2.800 W (5.000-5.800 Booster)

Electrical supply:

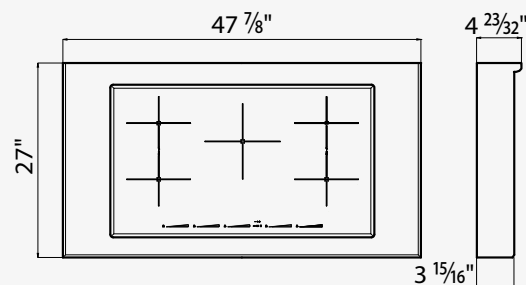
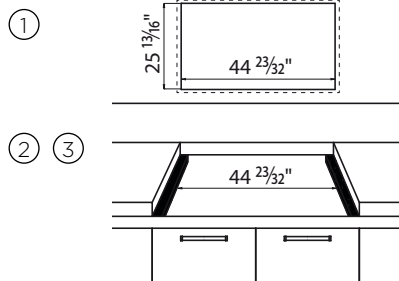
208-240V - 50/60 Hz

Accessories



5 8210 008
Induction Pro pot set

Cut-out



Extended cooking area

Bridge function allow to associate two zones, forming a single extended cooking zone for pots of large size, or for more than one cooking simultaneously, with maximum flexibility in pot positioning.



Slider control

The Slider control allows for extremely quick temperature setting: with a light touch of the finger you may select the desired power level on the TOUCH display.



T-chef

Allows to set particular temperatures (melt 70°C/158°F, simmer 94°C/201°F) and keep them constant during cooking. Elaborate preparations can be easily obtained with chef-like results.

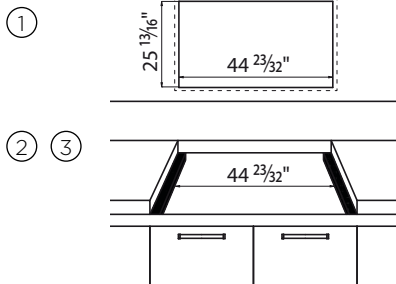
Foster Milano Wash Station



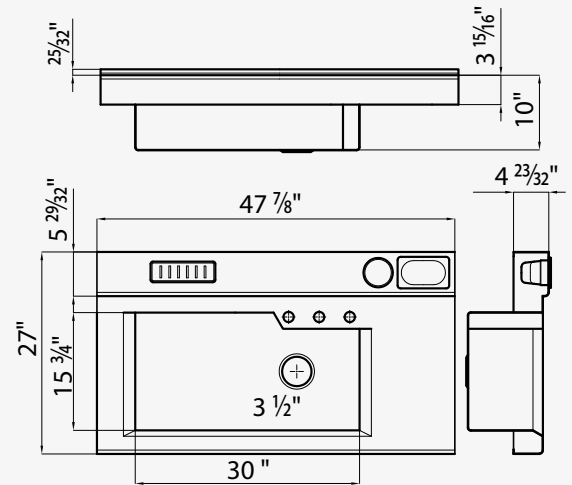
Accessories:

M4 N4 P2 T2 Z2

Cut-out



Foster Milano Wash Station - 48" x 27"
3153 900



Accessories



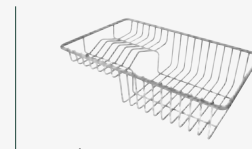
M4 8656 001



N4 8644 100



P2 * 8159 101



T2 * 8100 303



Z2 * 8151 000

* To use only with N3 chopping board



Foster Milano

4:11

Ranges





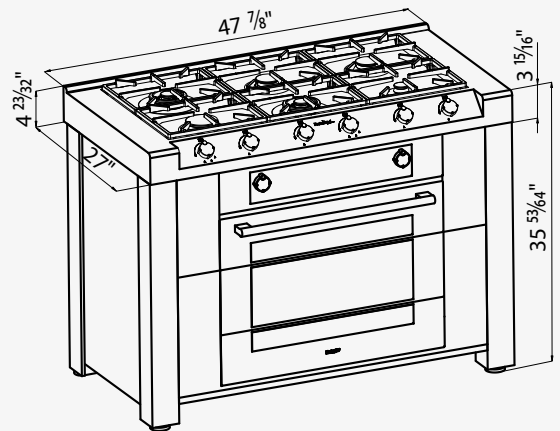
Cucinotta Range 6b - 48"x 27"

7166 900

dimensions: 47 7/8" x 27" x 35 53/64"

AISI 304 Stainless steel

Satin finish



Rangetop specifications

Enamelled cast iron grids and burner covers
 Electric under-knob ignition
 Gas taps with safety valves
 Power: 64,200 BTU total
 LP Gas conversion kit included
 Electrical Supply: 120VAC - 60Hz

Oven specifications

30" Multifunction pyrolytic oven
 Capacity: 4.1 CU.FT
 Stainless steel satin finish
 Dual fan system
 Electronic programming
 12 cooking function
 Pyrolytic self clean
 Meat probe temperature control
 Electronic temperature regulation
 Triple asymmetrical lighting
 Automatic fast preheat
 Preheat time bar (25%, 50%, 75%, 100%)
 Preset/last used temperature memory
 Keyboard lock
 Child lock door
 Sabbath mode
 °C/°F degree unit
 12/24 hours clock format
 Door glasses: 4 heat resistant glasses
 Door inner side: full glass

Delivered accessories

2 chromed racks
 Telescopic chromed rack
 Enamelled grill set
 Meat Probe
 Electrical Supply: 120/240VAC - 60Hz
 120/208VAC - 60Hz



Foster Milano Ranges *Cucinotta*



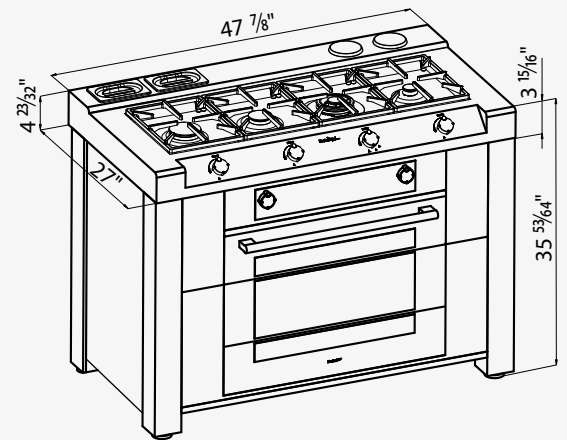
Cucinotta Range 4b - 48"x 27"

7154 900

dimensions: 47 7/8" x 27" x 35 53/64"

AISI 304 Stainless steel

Satin finish



Rangetop specifications

Enamelled cast iron grids and burner covers
 Electric under-knob ignition
 Gas taps with safety valves
 Power: 39,600 BTU total
 LP Gas conversion kit included
 Electrical Supply: 120VAC - 60Hz

Oven specifications

30" Multifunction pyrolytic oven
 Capacity: 4.1 CU.FT
 Stainless steel satin finish
 Dual fan system
 Electronic programming
 12 cooking function
 Pyrolytic self clean
 Meat probe temperature control
 Electronic temperature regulation
 Triple asymmetrical lighting
 Automatic fast preheat
 Preheat time bar (25%, 50%, 75%, 100%)
 Preset/last used temperature memory
 Keyboard lock
 Child lock door
 Sabbath mode
 °C/°F degree unit
 12/24 hours clock format
 Door glasses: 4 heat resistant glasses
 Door inner side: full glass

Delivered accessories

2 chromed racks
 Telescopic chromed rack
 Enamelled grill set
 Meat Probe
 Electrical Supply: 120/240VAC - 60Hz
 120/208VAC - 60Hz





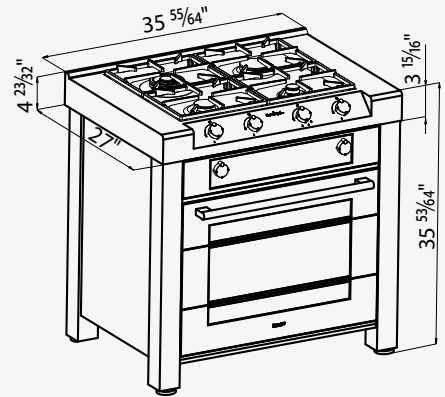
Cucinotta Range 4b - 36" x 27"

7162 900

dimensions: 35 55/64" x 27" x 35 53/64"

AISI 304 Stainless steel

Satin finish



Rangetop specifications

Enamelled cast iron grids and burner covers

Electric under-knob ignition

Gas taps with safety valves

Power: 39.600 BTU total

LP Gas conversion kit included

Electrical Supply: 120VAC - 60Hz

Oven specifications

30" Multifunction pyrolytic oven

Capacity: 4.1 CU.FT

Stainless steel satin finish

Dual fan system

Electronic programming

12 cooking function

Pyrolytic self clean

Meat probe temperature control

Electronic temperature regulation

Triple asymmetrical lighting

Automatic fast preheat

Preheat time bar (25%, 50%, 75%, 100%)

Preset/last used temperature memory

Keyboard lock

Child lock door

Sabbath mode

°C/°F degree unit

12/24 hours clock format

Door glasses: 4 heat resistant glasses

Door inner side: full glass

Delivered accessories

2 chromed racks

Telescopic chromed rack

Enamelled grill set

Meat Probe

Electrical Supply: 120/240VAC - 60Hz

120/208VAC - 60Hz

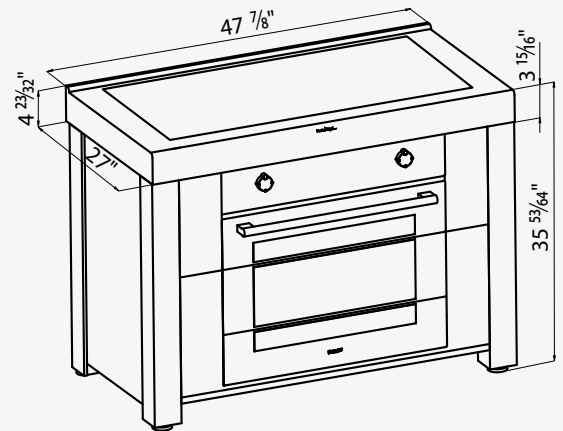




Foster Milano Induction Range - 48" x 27"

7170 900

dimensions: 47 7/8" x 27" x 35 53/64"
 AISI 304 Stainless steel
 Satin finish



Rangetop specifications

AISI 304 Stainless steel - Satin finish
 Induction cooker hob:
 9 settings plus powerboost
 5 slider commands
 Bridge function
 T-chef function
 Pause and Recall
 Independent timer
 Security lock
 Residual heat light
 Overflow detection
 4 zones size 7x8" 1 zone size 7x10"
 power 1.900-2.200 W (3.400-3.900
 Booster)
 1 zone size 7x10"
 power 2.400-2.800 W (5.000-5.800
 Booster)
 Electrical supply:
 208-240V - 50/60 Hz

Accessories



5 8210 008
 Induction Pro pot set

Oven specifications

30" Multifunction pyrolytic oven
 Capacity: 4.1 CU.FT
 Stainless steel satin finish
 Dual fan system
 Electronic programming
 12 cooking function
 Pyrolytic self clean
 Meat probe temperature control
 Electronic temperature regulation
 Triple asymmetrical lighting
 Automatic fast preheat
 Preheat time bar (25%, 50%, 75%, 100%)
 Preset/last used temperature memory
 Keyboard lock
 Child lock door
 Sabbath mode
 °C/°F degree unit
 12/24 hours clock format
 Door glasses: 4 heat resistant glasses
 Door inner side: full glass
 Delivered accessories
 2 chromed racks
 Telescopic chromed rack
 Enamelled grill set
 Meat Probe
 Electrical Supply: 120/240VAC - 60Hz
 120/208VAC - 60Hz

Foster Milano Free-standing Washing Center



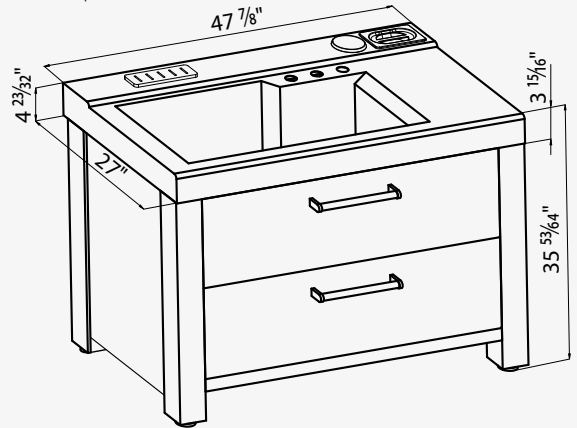
Foster Milano washing center - 48" x 27"

7153 900

Dimensions: 47 7/8" x 27" x 35 53/64"
 AISI 304 Stainless steel
 Satin finish

Sink specifications:

Bowl: 30" x 15 6/8"
 Waste fitting: SPACE 3 1/2"
 Three tap holes



Accessories



Foster management system is ISO 9001:2008 certified

Registration number CH-36474 



Foster After Sales and Parts Service



Foster After Sales and Parts Service

7575 E Redfield Rd #129, Scottsdale, AZ 85260
telephone: (844) 639 6001 - fax: (480) 998 7877
email: foster@adcosservice.com





FOSTER MILANO INC.

6001 NORTH POWERLINE ROAD
FORT LAUDERDALE,
FLORIDA 33309
telephone: +1 (954) 489 9009
info@foster-us.com
www.foster-us.com

Foster Milano inc
is a company of Foster spa Group

Foster spa - Via M. S. Ottone, 18/20
42041 Brescello (Re) Italy
Tel. +39 0522 687425
E-mail: info@fosterspa.com
www.fosterspa.com

This publication is for international use.
The features are purely guideline.
We reserve the right to modify them
at any moment without notice.
The Foster Organization will be pleased
to provide further details and updates
about the products and services.

© Foster spa. Not to be reproduced
wholly or in part without
written permission of Foster spa.

Realized in collaboration with Maxistudio
Photographer Andrea De Marchi
Printed in february 2018



FOSTER MILANO INC.

6001 North Powerline Road - Fort Lauderdale, Florida 33309

telephone: +1 (954) 489 9009 info@foster-us.com - www.foster-us.com